

2020 Land Budget Overview

Platte River Recovery Implementation Program

For More Information Contact: Jason Farnsworth, farnsworthj@headwaterscorp.com (308) 237-5728

2020 Land Budget Overview By Budget Line Item

Budget Line Item	Description	Estimated Expenditure****
LP-2	Adaptive Management Species Habitat Actions*	\$610,948
LP-3	New Land Acquisitions	\$3,000,000
LP-4	Property Maintenance & Agricultural Operations**	\$193,900
LP-6	Land Plan Special Advisors	\$20,000
LP-7	Public Access Management	\$40,000
WP-4 (j)	Property Maintenance for Water Properties***	\$79,000

* Includes \$50,000 in LP-2 for new acquisitions in 2020.

** Includes \$50,000 in LP-4 for new acquisitions in 2020.

*** Includes \$15,000 in WP-4 (j) for new acquisitions in 2020.

**** The budget items have been reviewed and approved by the LAC on October ??, 2019.

2020 Budget Overview By Complex

Complex	Estimated Expenditure	Estimated Income
Non-Complex Tracts	\$55,559	\$48,100
Plum Creek "Complex"	\$37,550	\$12,350
Cottonwood Ranch Complex	\$64,683	\$14,135
Elm Creek Complex	\$47,331	\$17,950
Pawnee Complex	\$36,300	\$585
Fort Kearny Complex	\$62,840	\$45,200
Minden-Gibbon Complex	\$28,695	\$0
Clark Island Complex	\$108,519	\$32,290
Shoemaker Island Complex	\$38,241	\$42,595
Chapman Complex	\$225,130	\$0
Water Properties	\$64,000	\$32,576
New Acquisitions (Estimated 4)*	\$115,000	\$0
Total	\$883,848	\$245,781

* \$50K for maintenance, \$50K for species habitat & \$15K for water land maintenance

2020 Budget Priority Areas by Budget Line Item

LP-2 – Adaptive Management Species Habitat Actions: Species habitat priorities for 2020 are focused on creation and maintenance of suitable complex and non-complex habitat for Program target species.

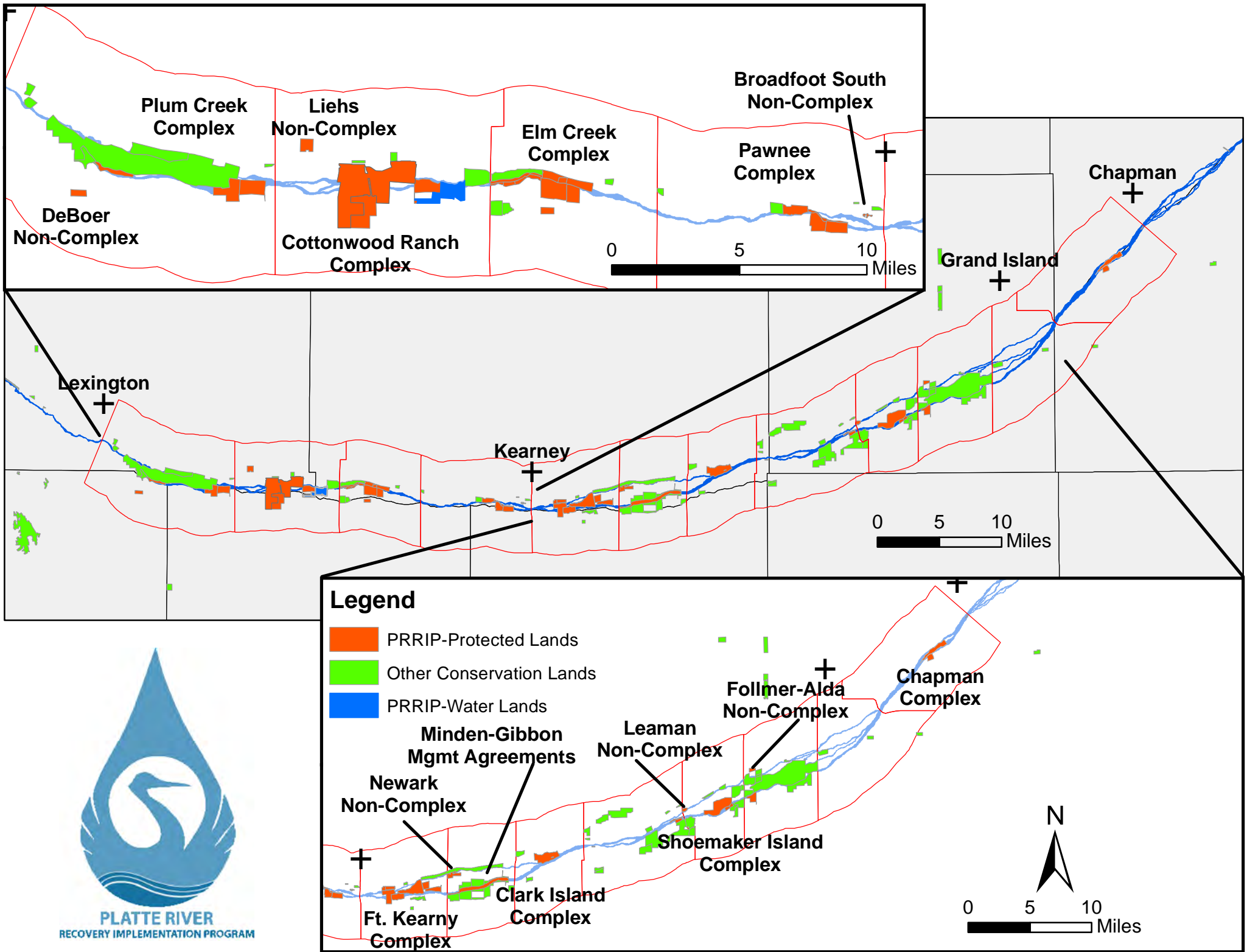
LP-3 – New Land Acquisitions: 2020 land acquisition priorities include identification and acquisition of lands for construction of an additional 60 acres of off-channel sand and water habitat for least tern and piping plover nesting habitat and identification and acquisition of lands that could count towards the First Increment Extension habitat land "plus up" of 1,500 acres.

LP-4 – Property Maintenance & Agricultural Operations: 2020 priorities include maintenance of basic land infrastructure such as facilities, roads, and fences as well as fulfilling basic ownership obligations like noxious weed control and ROW mowing.

LP-6 – Land Plan Special Advisors: Priorities for special advisors include administration of agricultural leases and associated FSA obligations, crop management and marketing, and assistance in cropland conversions.

LP-7 – Public Access Management: Nebraska Game and Parks Commission will manage public access to Program lands in 2020.

WP-4 (j) – Property Maintenance for Water Properties: 2020 priorities include maintenance of basic land infrastructure such as facilities, roads, and fences as well as fulfilling basic ownership obligations like noxious weed control and ROW mowing.



LP-2	Priority Area: <i>Species Habitat</i>			
			Total	%
	Item(s): <i>Improve Target Species Sand and Water Habitat</i>	Island Tree Clearing	\$210,000	34%
		Herbicide treatment on south bank to kill vegetation prior to disking	\$2,000	0.33%
		Disking if necessary to provide in-channel vegetation control	\$192,390	31%
		Subtotal	\$404,390	66%
	Item(s): Maintain Suitable In- and Off-Channel Sand & Water Habitat	Herbicide applications on OCSW peninsulas to maintain bare sand nesting habitat	\$19,400	3%
		Construct 10 acres of on-channel LT/PP MCA habitat	\$15,330	3%
		Predator Fence Construction	\$10,200	2%
		Subtotal	\$44,930	7%
	Item(s): <i>Maintain Suitable Palustrine Wetland Habitat</i>	Irrigation Well Pumping	\$8,400	1.37%
		Brush, tree, cattail herbicide spraying	\$11,700	2%
		Custom Farming Expense	\$16,500	3%
		Subtotal	\$36,600	6%
	Item(s): Whooping Crane Grassland / Wet Meadow Habitat	Prescribed Burning	\$60,028	10%
		Russian olive & Tree Pile Removal	\$15,000	2%
		Subtotal	\$75,028	12%
		Existing Land Subtotal	\$560,948	92%
		2020 New Acquisitions	\$50,000	8%
		LP-2 Budget Total	\$610,948	100%

LP-4	Priority Area: Operations and Maintenance			
			Total	%
	Item(s): <i>Basic Property Maintenance Obligations and Needs</i>	Fence & Road Maintenance	\$37,000	19%
		Noxious Weed Control	\$69,800	36%
		Mowing	\$11,300	6%
		Lodge & Quonset Utilites & maintenance	\$5,600	3%
		Cabin Utilites & maintenance	\$2,500	1%
		Fence Replacement	\$13,200	7%
		Electricity for Livestock wells	\$4,500	2%
		Existing Land Subtotal	\$143,900	74%
		2020 New Acquisitions	\$50,000	26%
		LP-4 Budget Total	\$193,900	100%

WP-4(j)	Priority Area: Water Tract Operations and Maintenance			
			Total	%
	Item(s): <i>Basic Property Maintenance Obligations and Needs</i>			
		Fence & Road Maintenance	\$7,000	9%
		Fence Replacement	\$16,500	21%
		Noxious Weed Control	\$15,000	19%
		Mowing	\$2,000	3%
		Custom Farm Expense	\$23,000	29%
		Electricity for Livestock wells	\$500	1%
		Existing Land Subtotal	\$64,000	81%
		2020 New Acquisitions	\$15,000	19%
		WP-4 (j) Budget Total	\$79,000	100%

2020 Non-Complex Properties Annual Work Plan

Platte River Recovery Implementation Program

For More Information Contact: Jason Farnsworth, farnsworthj@headwaterscorp.com (308) 237-5728

General Priorities

- * **Good Neighbor Policy** - *Conduct all actions in accordance with Program's good neighbor policy.*

Adaptive Management Priorities

- * **Species Monitoring** – Monitor whooping crane use of non-complex palustrine wetlands and least tern and piping plover use and productivity at off-channel sand and water nesting sites.

Species Habitat Priorities

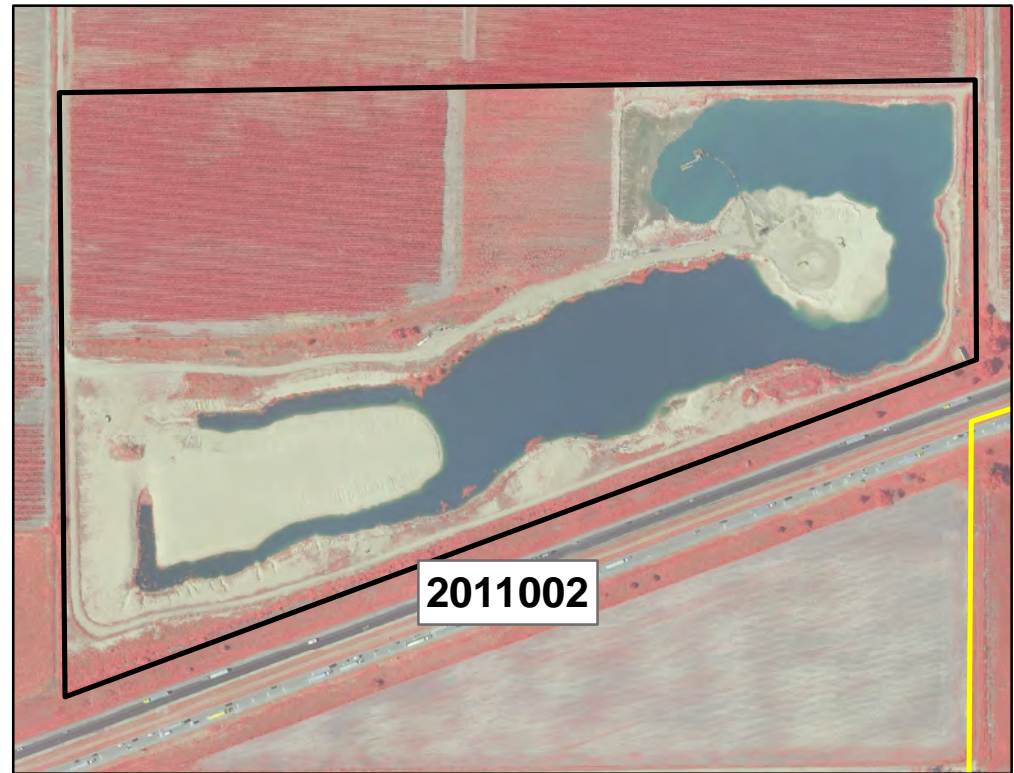
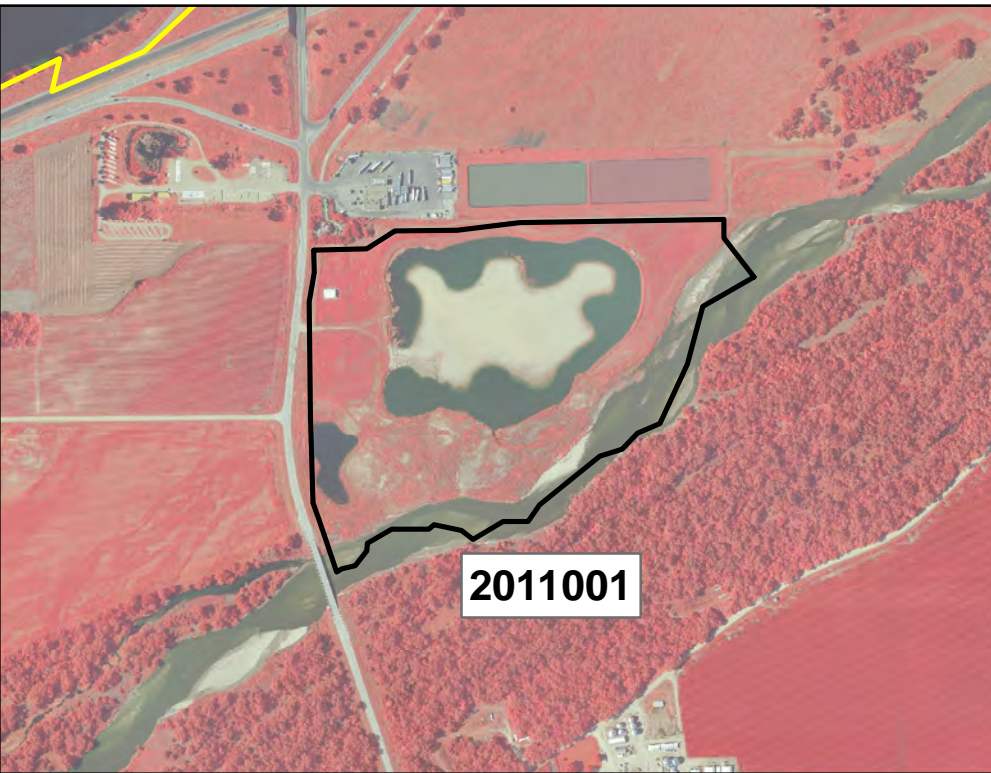
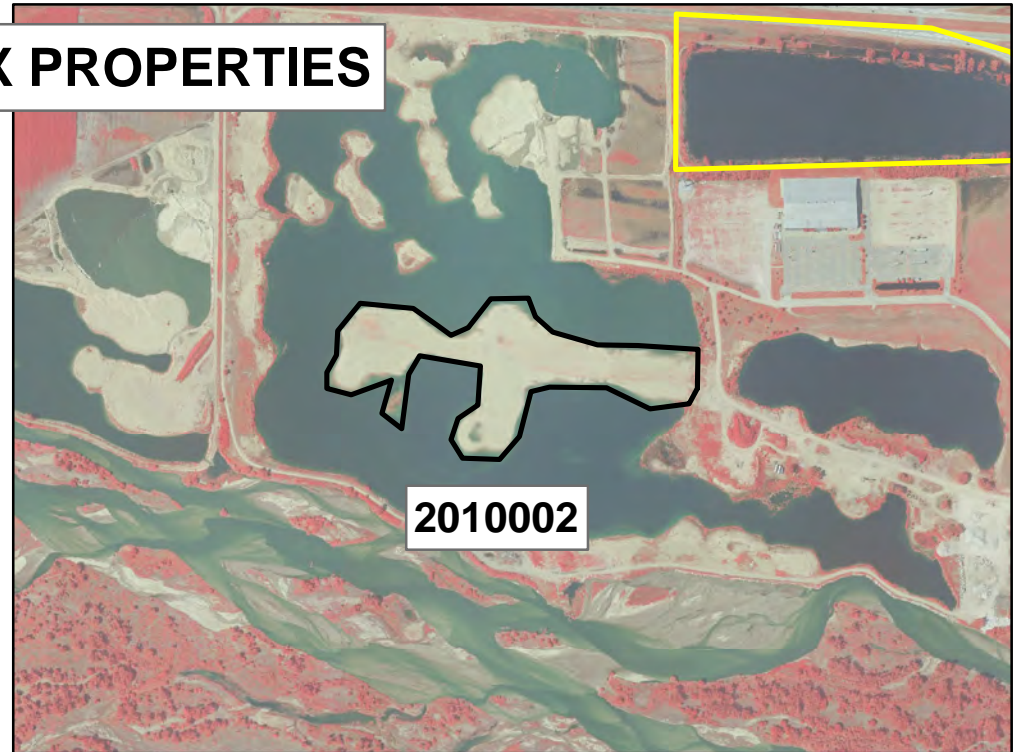
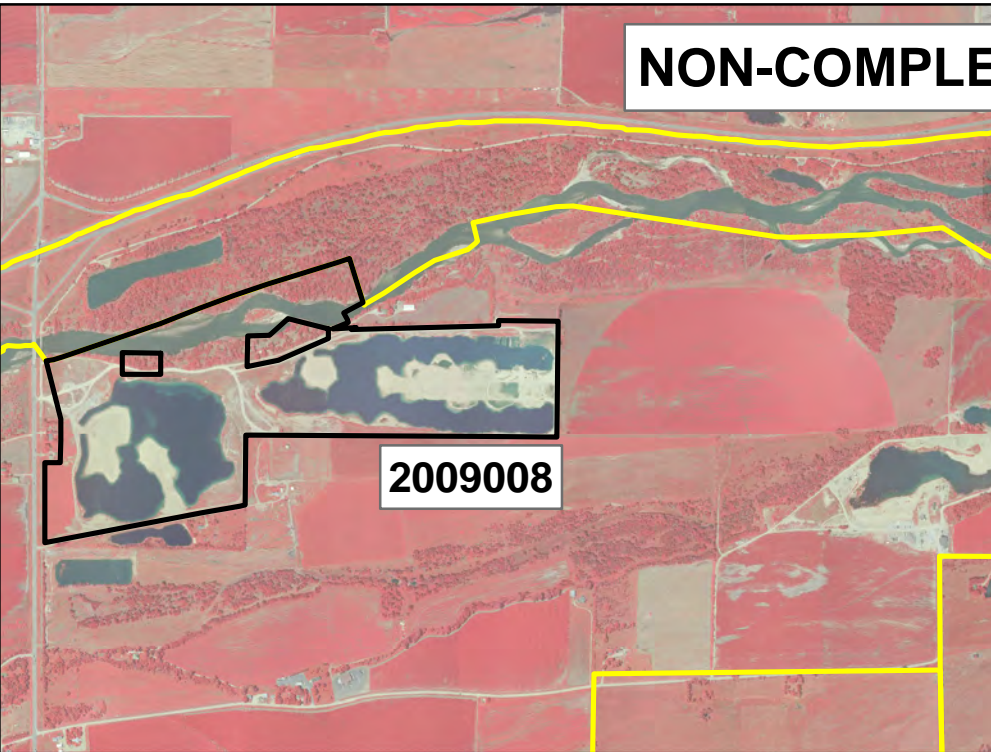
- * **Maintain Suitable Off-Channel Sand and Water Nesting Habitat** – Apply pre-emergent herbicide on Tracts 2009008, 2010002, 2011001, and 2011002 OCSW nesting habitat to prevent vegetation encroachment into nesting areas.
- * **Maintain Suitable Palustrine Wetland Roosting Habitat** – Manage vegetation height in the palustrine wetland areas of Tracts 2012004 and 2013001 to maintain suitable unobstructed view widths for whooping crane roosting.
- * **Protecting Other Species of Concern** – Identify presence of and determine methods to protect other species of concern during implementation of land-related activities.

Operations and Maintenance Priorities

- * **Basic Property Maintenance Obligations and Needs** – Fulfill basic property ownership obligations and needs including boundary fence signage, road maintenance, and noxious weed control.
- * **Agricultural Operations** – Oversight of crop leases on Tracts 2009008, 2012004 and 2013001 and hay lease on Tract 2011001.
- * **Sand and Gravel Mining Operations** – *Monitor sand and gravel mining operations on Tracts 2009008 and 2011002.*

NOTE: The budget section of this work plan only contains information for work items that are specific to these tracts. As such, tract-specific research and monitoring actions are presented but system-scale actions like target species and geomorphology/vegetation monitoring are not.

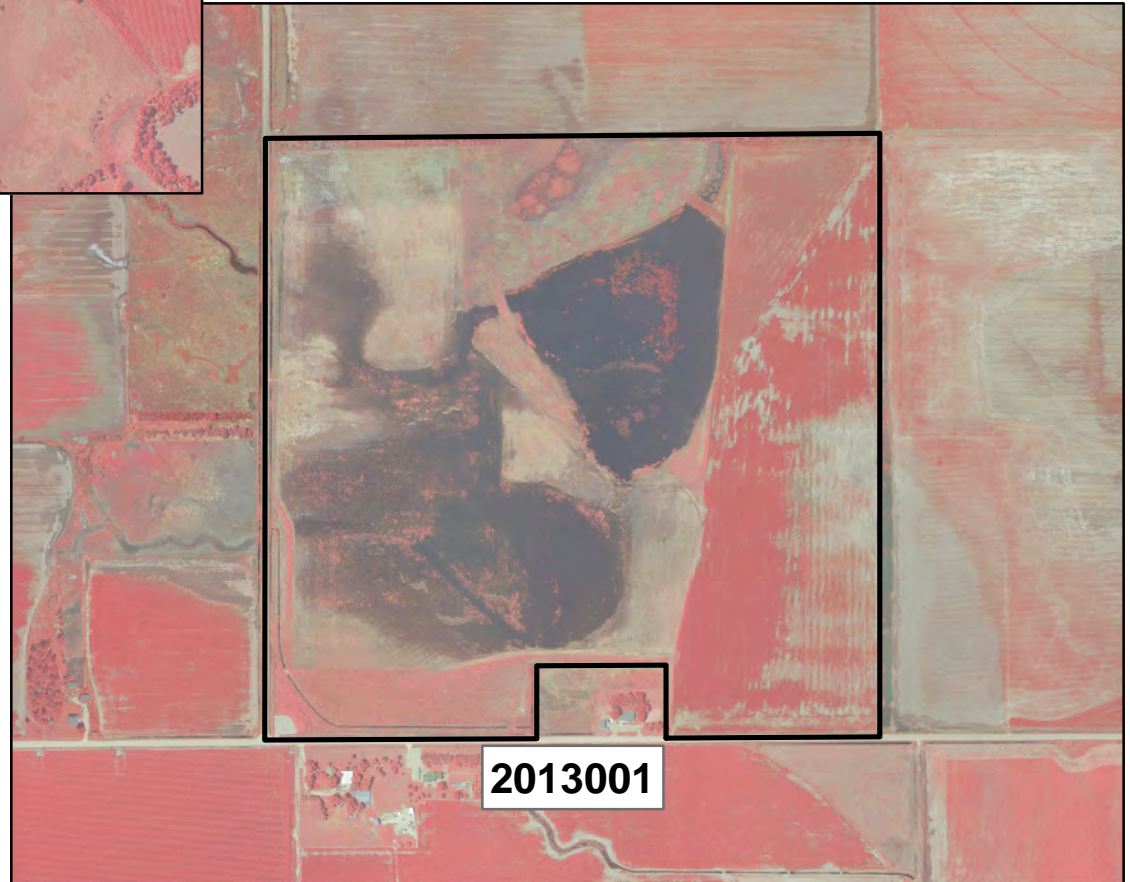
NON-COMPLEX PROPERTIES



NON-COMPLEX PROPERTIES



2012004



2013001

Legend

Conservation Lands

OWNERSHIP



PRRIP-Protected Lands



Other Conservation Lands

Priority Area: *General***Item(s):** *Land Interest and Tract-Level Restoration and Maintenance Planning*

No.	Management Activities	Target Dates	Person Responsible	Cost (Estimated)	Budget Line Item
NC 1	Coordination of Program land actions with neighboring landowners	Annual	BS	N/A	N/A

Priority Area: *Species Habitat***Item(s):** *Maintain Suitable In- and Off-Channel Sand & Water Habitat*

No.	Management Activities	Target Dates	Person Responsible	Cost (Estimated)	Budget Line Item
NC 2	Herbicide applications on OCSW peninsulas to maintain bare sand nesting habitat	4/2020 & 9/2020	TT	\$12,000	LP-2
NC 3	Tract 2009008 Predator Fence (~380 LF)	1/1/20 - 4/15/20	TT	\$5,700	LP-2
NC 4	Tract 2010002 Predator Fence (~300 LF)	1/1/20 - 4/15/20	TT	\$4,500	LP-2

Priority Area: *Species Habitat***Item(s):** *Maintain Suitable Palustrine Wetland Habitat*

No.	Management Activities	Target Dates	Person Responsible	Cost (Estimated)	Budget Line Item
NC 5	Irrigation well pumping to augment water level in wetland area of Tract 2013001	3/1/20 - 4/15/20 & 10/1/20-11/15/20	TT	\$3,000	LP-2
NC 6	Tract 2012004 Prescribed burn (70 ac)	3/15/20 – 5/15/20	TT	\$3,010	LP-2
NC 7	Tract 2013001 Prescribed burn (43 ac)	3/15/20 – 5/15/20	TT	\$1,849	LP-2
NC 8	Brush, tree, cattail herbicide spraying	1/16/20-11/1/20	TT	\$3,300	LP-2
NC 9	Tract 2013001 Custom Farming Expenses	5/15/20-11/15/20	TT	\$16,500	LP-2

Priority Area: *Species Habitat***Item(s):** *Other Species of Concern*

No.	Management Activities	Target Dates	Person Responsible	Cost (Estimated)	Budget Line Item
NC 10	Habitat and species surveys on properties where work will occur	As Needed	DB	N/A	N/A
NC 11	Coordination with USFWS and NGPC to identify and mitigate potential impacts associated with land activities	Annual	DB	N/A	N/A

Priority Area: Operations and Maintenance

Item(s): *Basic Property Maintenance Obligations and Needs*

No.	Management Activities	Target Dates	Person Responsible	Cost (Estimated)	Budget Line Item
NC 12	Fence and road maintenance	Annual	TT	\$1,500	LP-4
NC 13	Noxious weed control	6/1/20 – 8/31/20	TT	\$2,000	LP-4
NC 14	Mowing	7/15/20 - 10/15/20	TT	\$1,000	LP-4
NC 15	Tract 2012004 Electricity	7/15/20 - 10/15/20	TT	\$1,200	LP-4

Priority Area: Operations and Maintenance

Item(s): *Agricultural Operations*

No.	Management Activities	Target Dates	Person Responsible	Cost (Estimated)	Budget Line Item
NC 16	Oversight of grazing and cropland	Annual	TT	N/A	N/A
NC 17	Oversight of sand and gravel mining	Annual	BS	N/A	N/A

Personnel Responsibility Key

BS – Bruce Sackett (Director of Acquisitions)

DB – David Baasch (Director of Biological and Ecological Services)

JB – Justin Brei (Biosystems Engineer)

KW – Kevin Werbylo (Water Resource Engineer)

TT – Tim Tunnell (Senior Land Manager)

Property Identification Key:

2009008 - PRRIP Broadfoot Newark Tract

2010002 - Broadfoot Kearney South Tract

2011001 - PRRIP East Leaman Tract

2011002 - PRRIP Follmer Alda Tract

2012004 - PRRIP DeBore Tract

2013001 - PRRIP Liehs Tract

2020 Non-Complex Tracts Budget Summary

Estimated 2020 Expenditures by Program Budget Line Item

Priority Area	Item	Budget Line Item	Estimated Expenditure
Species Habitat	Create & Maintain Off-Channel Sand & Water Habitat	LP-2	\$22,200
Species Habitat	Create & Maintain Palustrine Wetland Habitat	LP-2	\$27,659
Subtotal			\$49,859
Operations and Maintenance	Property Maintenance and Agricultural Operations	LP-4	\$5,700
Total			\$55,559

Estimated 2020 Revenues

Tract	Item	Estimated Income
Tract 2009008	Sand & Gravel Royalties	\$7,700
Tract 2009008	Hay Income	\$400
Tract 2011001	Hay Income	\$500
Tract 2011002	Sand & Gravel Royalties	\$5,000
Tract 2011002	Cropland Cash Rent Income	\$3,060
Tract 2012004	Cropland Cash Rent Income	\$3,000
Tract 2012004	Grazing Income	\$2,000
Tract 2013001	Cropland Cash Rent Income	\$6,600
Tract 2013001	Cropland Custom Farm Income	\$19,840
Total		\$48,100

2020 Plum Creek "Complex" Annual Work Plan

Platte River Recovery Implementation Program

For More Information Contact: Jason Farnsworth, farnsworthj@headwaterscorp.com (308) 237-5728

General Priorities

- * **Good Neighbor Policy** - Conduct all actions in accordance with Program's good neighbor policy.

Adaptive Management Priorities

- * **Implementation of full scale sediment augmentation** - Augment 40,000 cubic yards of sediment through mechanical augmentation. Augmentation will occur upstream of the Plum Creek Complex near the J-2 Return.
- * **Species Monitoring** – Monitor whooping crane use of riverine roosting habitat and least tern and piping plover use and productivity at off-channel sand and water nesting sites.

Species Habitat Priorities

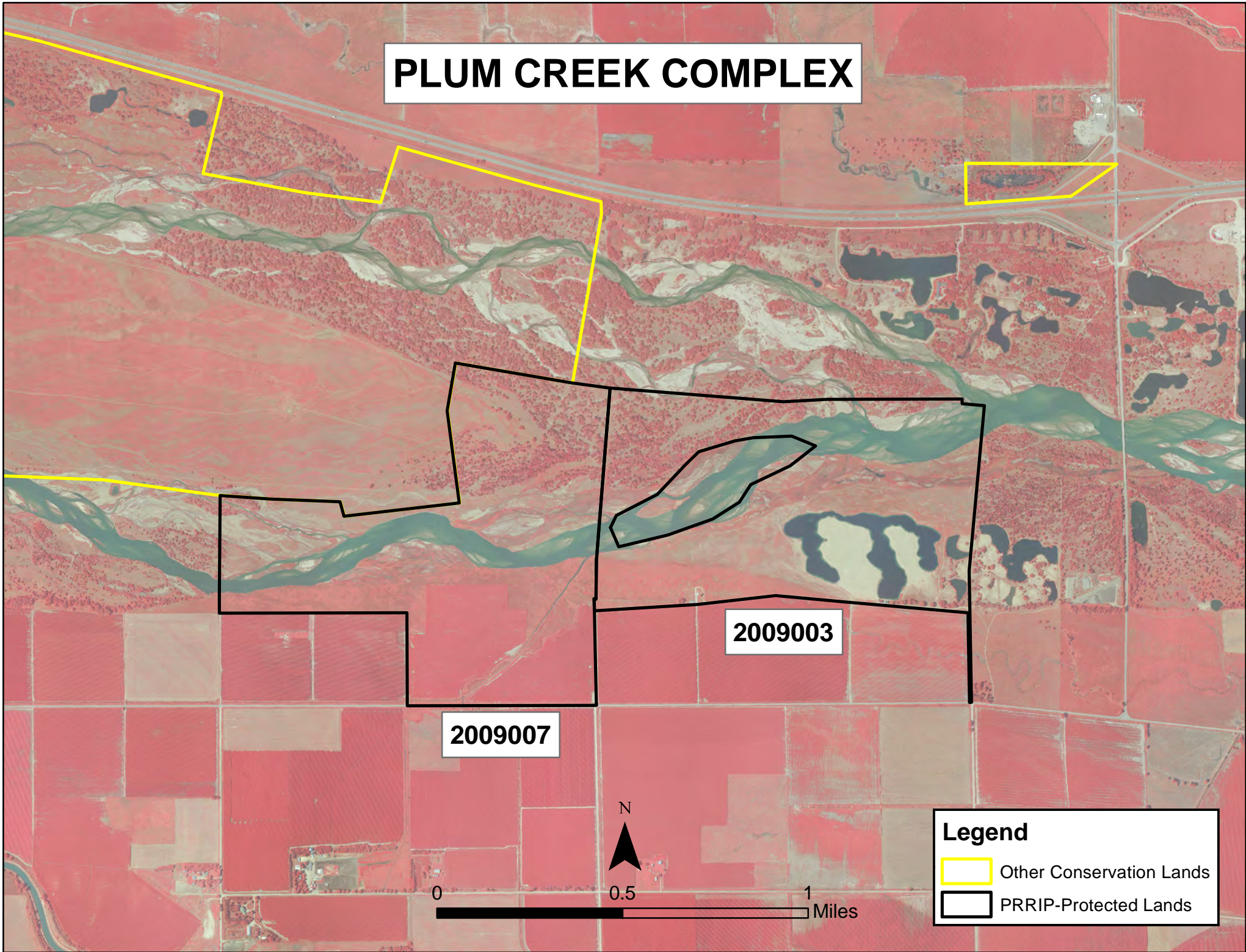
- * **Improve Target Species Sand and Water Habitat** – Application of pre-emergent herbicide on OCSW peninsulas to maintain tern and plover nesting habitat. Control in-channel vegetation to maintain suitable unobstructed view widths for whooping cranes.
- * **Protecting Other Species of Concern** – Identify presence of and determine methods to protect other species of concern during implementation of land-related activities.

Operations and Maintenance Priorities

- * **Basic Property Maintenance Obligations and Needs** – Fulfill basic property ownership obligations and needs including boundary fence signage, road maintenance, and noxious weed control.
- * **Agricultural Operations** – Oversight of grazing lease on Tract 2009003. Oversight of cropland/hay leases on Tract 2009007.

NOTE: The budget section of this work plan only contains information for work items that are specific to these tracts. As such, tract-specific research and monitoring actions are presented but system-scale actions like target species and geomorphology/vegetation monitoring are not.

PLUM CREEK COMPLEX

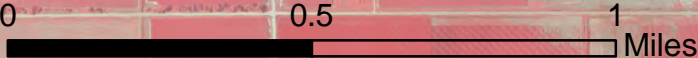


2009003

2009007

Legend

-  Other Conservation Lands
-  PRRIP-Protected Lands



Priority Area: General**Item(s):** *Complex Land Interest and Complex-Level Planning*

No.	Management Activities	Target Dates	Person Responsible	Cost (Estimated)	Budget Line Item
PC 1	Coordination of Program land actions with neighboring landowners	Annual	BS	N/A	N/A
PC 2	Coordinate with NPPD to identify and mitigate potential impacts to leased NPPD nesting islands	Annual	DB	N/A	N/A

Priority Area: Species Habitat**Item(s):** *Improve Target Species Sand and Water Habitat*

No.	Management Activities	Target Dates	Person Responsible	Cost (Estimated)	Budget Line Item
PC 3	Herbicide applications on OCSW peninsulas to maintain bare sand nesting habitat	4/20 & 9/20	TT	\$4,400	LP-2
PC 4	Disking if necessary to provide in-channel vegetation control (71 ac)	9/1/20 – 10/1/20	TT	\$19,750	LP-2

Priority Area: Species Habitat**Item(s):** *Whooping Crane Grassland / Wet Meadow Habitat*

No.	Management Activities	Target Dates	Person Responsible	Cost (Estimated)	Budget Line Item
PC 5	No items	N/A	NIA	N/A	N/A

Priority Area: *Species Habitat***Item(s): *Other Species of Concern***

No.	Management Activities	Target Dates	Person Responsible	Cost (Estimated)	Budget Line Item
PC 6	Habitat and species surveys on properties where work will occur	As Needed	DB	N/A	N/A
PC 7	Coordination with USFWS and NGPC to identify and mitigate potential impacts associated with land activities	1/1/20 – 4/1/20	DB	N/A	N/A

Priority Area: Operations and Maintenance**Item(s): *Basic Property Maintenance Obligations and Needs***

No.	Management Activities	Target Dates	Person Responsible	Cost (Estimated)	Budget Line Item
PC 8	Fence and road maintenance	Annual	TT	\$1,500	LP-4
PC 9	Noxious weed control	6/1/20 – 8/31/20	TT	\$4,300	LP-4
PC 10	Lodge & Quonset utilities and maintenance	Annual	TT	\$5,600	LP-4
PC 11	Mowing	7/15/20-10/15/20	TT	\$2,000	LP-4

Priority Area: Operations and Maintenance**Item(s): *Agricultural Operations***

No.	Management Activities	Target Dates	Person Responsible	Cost (Estimated)	Budget Line Item
PC 12	Oversight of grazing and cropland leases	Annual	TT	N/A	N/A

Personnel Responsibility Key

BS – Bruce Sackett (Director of Acquisitions)

DB – David Baasch (Director of Biological and Ecological Services)

JB – Justin Brei (Biosystems Engineer)

KW – Kevin Werbylo (Water Resource Engineer)

TT – Tim Tunnell (Senior Land Manager)

Property Identification Key:

2009003 - PRRIP Dyer Tract

2009007 - PRRIP Cook Tract

2020 Plum Creek Complex Budget Summary

Estimated 2020 Expenditures by Program Budget Line Item

Priority Area	Item	Budget Line Item	Estimated Expenditure
Species Habitat	Target Species Sand and Water Habitat	LP-2	\$24,150
Species Habitat	Whooping Crane Wet Meadow/ Grassland Habitat	LP-2	\$0
Subtotal			\$24,150
Operations and Maintenance	Property Maintenance and Agricultural Operations	LP-4	\$13,400
Total			\$37,550

Estimated 2020 Revenues

Tract	Item	Estimated Income
Tract 2009003	NPPD Habitat Lease	\$500
Tract 2009003	Grazing Income	\$3,300
Tract 2009007	Haying Income	\$3,000
Tract 2009007	Cropland Income	\$5,550
Total		\$12,350

2020 Cottonwood Ranch Complex Annual Work Plan

Platte River Recovery Implementation Program

For More Information Contact: Jason Farnsworth, farnsworthj@headwaterscorp.com (308) 237-5728

General Priorities

- * **Good Neighbor Policy** - Conduct all actions in accordance with Program's good neighbor policy.

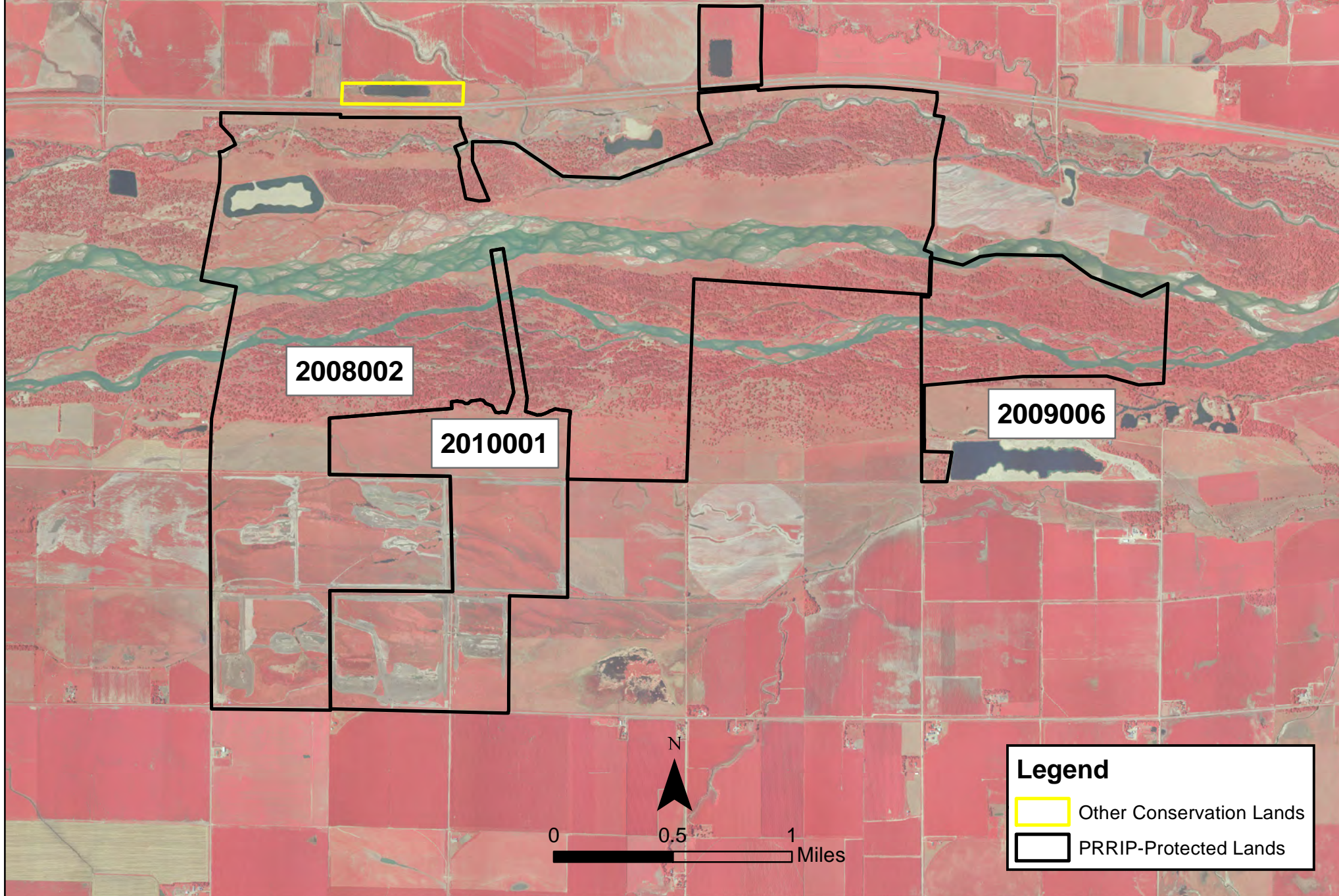
Adaptive Management Priorities

- * **Species Monitoring** – Monitor whooping crane use of riverine and off-channel palustrine wetland roosting habitat and least tern and piping plover use and productivity at off-channel sand and water nesting sites.

Species Habitat Priorities

- * **Maintain Target Species Sand and Water Habitat** – Application of pre-emergent herbicide on OCSW peninsula to maintain tern and plover nesting habitat. Control in-channel vegetation to maintain suitable unobstructed view widths for whooping cranes.
- * *Broad-Scale Recharge Water Supply and Whooping Crane Habitat Project – Construct berms and water control structures to allow for approximately 400 acres of ponded surface water in wet meadow areas south of the channel on Tracts 2008002 and 2010001.*
- * *Management of grassland/wet meadow habitat for whooping cranes and sandhill cranes – Grazing will continue on Lloyd Island for the 2020 grazing season. Wet meadow areas in Section 16 T8N R19W (Tracts 2008002 and 2010001) will not be grazed/hayed during the 2020 due to Broad -Scale Recharge Water Supply and Whooping Crane Habitat Project construction. Grazing/haying management will resume as soon as project is complete.*
- * **Protecting Other Species of Concern** – Identify presence of and determine methods to protect other species of concern during implementation of land-related activities.

COTTONWOOD RANCH COMPLEX



Operations and Maintenance Priorities

- * **Basic Property Maintenance Obligations and Needs** – Fulfill basic property ownership obligations and needs on Tracts 2008002, 2009006, and 2010001 including fence and road maintenance and noxious weed control.
- * **Agricultural Operations** – Oversight of grazing/ haying leases on Tracts 2009006 and 2010001.

NOTE: The budget section of this work plan only contains information for work items that are specific to these tracts. As such, tract-specific research and monitoring actions are presented but system-scale actions like target species and geomorphology/vegetation monitoring are not.

Priority Area: General

Item(s): *Complex Land Interest and Complex-Level Planning*

No.	Management Activities	Target Dates	Person Responsible	Cost (Estimated)	Budget Line Item
CR 1	Coordination of Program land actions with neighboring landowners	Annual	BS	N/A	N/A

Priority Area: Species Habitat

Item(s): *Improve Target Species Sand and Water Habitat*

No.	Management Activities	Target Dates	Person Responsible	Cost (Estimated)	Budget Line Item
CR 2	Tract 2008002 Pre-emergent herbicide application on plover nesting habitat and OCSW complex	4/1/20 – 4/30/20	TT, JJ	\$3,000	LP-2
CR 3	Disking if necessary to provide in-channel vegetation control -(~50 acres)	9/1/20 – 10/1/20	TT	\$13,900	LP-2

Priority Area: Species Habitat**Item(s):** *Whooping Crane Grassland / Wet Meadow Habitat*

No.	Management Activities	Target Dates	Person Responsible	Cost (Estimated)	Budget Line Item
CR4	Tract 2008002 Prescribed burn (86 ac)	3/15/20 – 5/15/20	TT	\$3,698	LP-2
CR 5	Tract 2008002 Prescribed burn (195 ac)	3/15/20 – 5/15/20	TT	\$8,385	LP-2

Item(s): Other Species of Concern

No.	Management Activities	Target Dates	Person Responsible	Cost (Estimated)	Budget Line Item
CR 6	Habitat and species surveys on properties where work will occur	As Needed	DB	N/A	N/A
CR 7	Coordination with USFWS and NGPC to identify and mitigate potential impacts associated with land activities	As Needed	DB	N/A	N/A

Priority Area: Operations and Maintenance**Item(s):** *Basic Property Maintenance Obligations and Needs*

No.	Management Activities	Target Dates	Person Responsible	Cost (Estimated)	Budget Line Item
CR 8	Tract 2010001 N Fence Replacement	1/1/20 – 12/31/20	TT	\$13,200	LP-4
CR 9	Fence and road maintenance	1/1/20 – 12/31/20	TT, JJ	\$5,000	LP-4
CR 10	Noxious weed control	6/1/20 – 8/31/20	TT, JJ	\$14,000	LP-4
CR 11	Mowing	7/15/20 - 10/15/20	TT	\$1,000	LP-4
CR 12	Tract 2010001 Electricity	5/15/20 – 10/15/20	TT	\$2,500	LP-4

Priority Area: Operations and Maintenance

Item(s): *Agricultural Operations*

No.	Management Activities	Target Dates	Person Responsible	Cost (Estimated)	Budget Line Item
CR 13	Tract 2009006 grazing lease oversight	5/15/20 – 10/15/20	TT	N/A	N/A
CR 14	Tract 2010001 grazing lease oversight	5/15/20 – 10/15/20	TT	N/A	N/A
CR 15	Tract 2010001 haying lease oversight	5/15/20 – 10/15/20	TT	N/A	N/A

Personnel Responsibility Key

JJ – Jim Jenniges (NPPD)

BS – Bruce Sackett (Director of Acquisitions)

DB – David Baasch (Director of Biological and Ecological Services)

JB – Justin Brei (Biosystems Engineer)

KW – Kevin Werbylo (Water Resource Engineer)

TT – Tim Tunnell (Senior Land Manager)

Property Identification Key:

2008002 - NPPD Cottonwood Ranch

2009006 - PRRIP Stall Tract

2010001 - PRRIP Morse Tract

2020 Cottonwood Ranch Complex Budget Summary

Estimated 2020 Expenditures by Program Budget Line Item

Priority Area	Item	Budget Line Item	Estimated Expenditure
Species Habitat	Target Species Sand and Water Habitat	LP-2	\$16,900
Species Habitat	Whooping Crane Wet Meadow/ Grassland Habitat	LP-2	\$12,083
Subtotal			\$28,983
Operations and Maintenance	Property Maintenance and Agricultural Operations	LP-4	\$35,700
Total			\$64,683

Estimated 2020 Revenues

Tract	Item	Estimated Income
Tract 2009006	Grazing Income	\$2,000
Tract 2010001	Grazing Income	\$5,775
Tract 2010001 SE 1/4	Grazing Income	\$3,360
Tract 2010001	Haying Income	\$3,000
Total		\$14,135

2020 Elm Creek Complex Annual Work Plan

Platte River Recovery Implementation Program

For More Information Contact: Jason Farnsworth, farnsworthj@headwaterscorp.com (308) 237-5728

General Priorities

- * **Good Neighbor Policy** - *Conduct all actions in accordance with Program's good neighbor policy.*

Adaptive Management Priorities

- * **Species Monitoring** – *Monitor whooping crane use of in-channel roosting habitat and least tern and piping plover use and productivity at off-channel sand and water nesting sites.*

Species Habitat Priorities

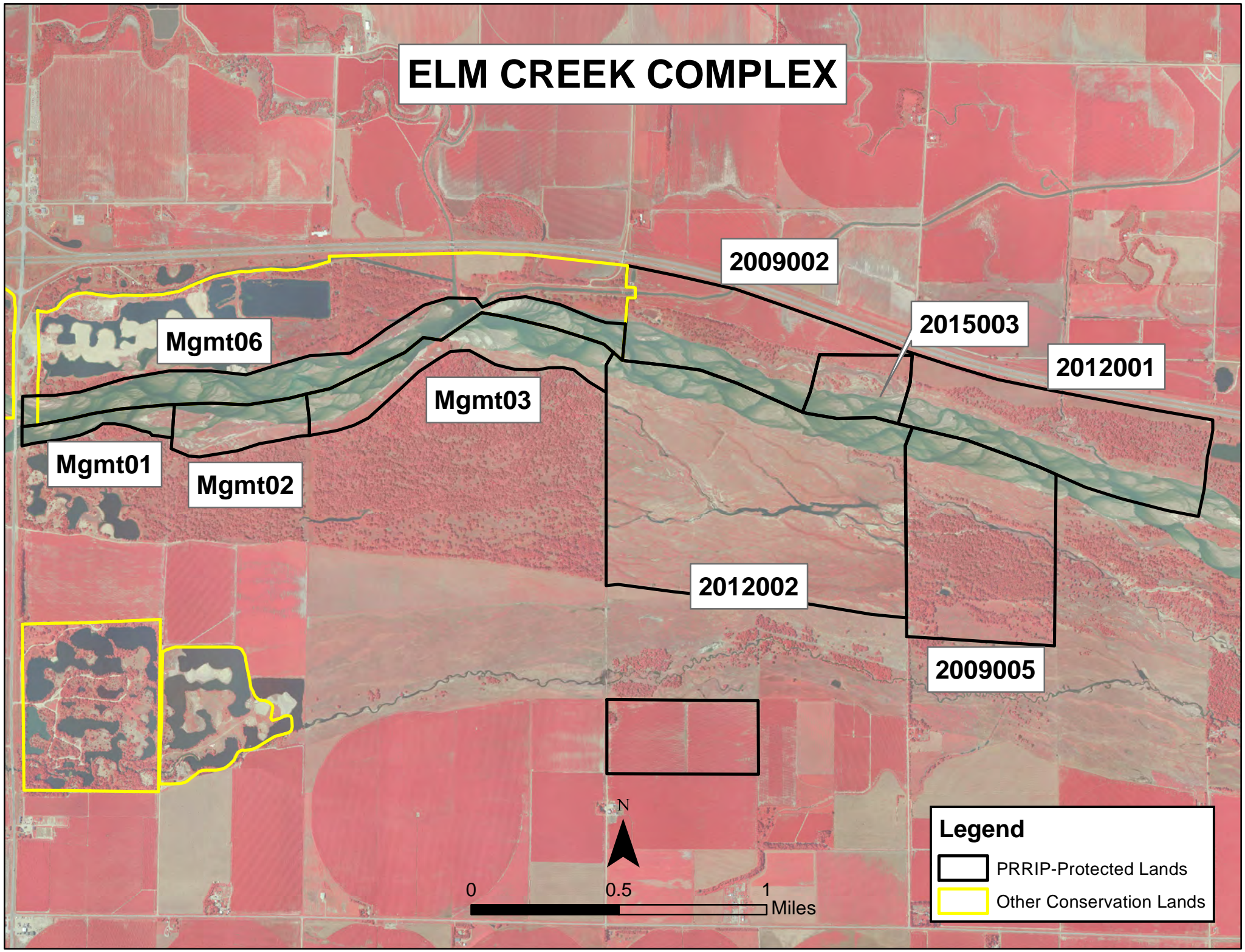
- * **Maintain Target Species Sand and Water Habitat** – *Control in-channel vegetation to maintain suitable unobstructed view widths for whooping cranes.*
- * **Protecting Other Species of Concern** – *Identify presence of and determine methods to protect other species of concern during implementation of land-related activities.*

Operations and Maintenance Priorities

- * **Basic Property Maintenance Obligations and Needs** – *Fulfill basic property ownership obligations and needs on Tracts 2009002, 2009005, 2012001 and 2012002 including fence and road maintenance and noxious weed control.*
- * **Agricultural Operations** – *Oversight of grazing/ haying leases on Tracts 2009005, 2012001 and 2012002.*

NOTE: The budget section of this work plan only contains information for work items that are specific to these tracts. As such, tract-specific research and monitoring actions are presented but system-scale actions like target species and geomorphology/vegetation monitoring are not.

ELM CREEK COMPLEX



Priority Area: General**Item(s):** *Complex Land Interest and Complex-Level Planning*

No.	Management Activities	Target Dates	Person Responsible	Cost (Estimated)	Budget Line Item
EC 1	Coordination of Program land actions with neighboring landowners	Annual	BS	N/A	N/A

Priority Area: Species Habitat**Item(s):** *Improve Target Species Sand and Water Habitat*

No.	Management Activities	Target Dates	Person Responsible	Cost (Estimated)	Budget Line Item
EC 2	In-channel cross disking (below diversion) and overbank mowing to maintain active channel and unobstructed view widths (50 acres)	9/1/20 – 10/1/20	TT	\$13,900	LP-2

Priority Area: Species Habitat**Item(s):** *Whooping Crane Grassland / Wet Meadow Habitat*

No.	Management Activities	Target Dates	Person Responsible	Cost (Estimated)	Budget Line Item
EC 3	Tract 2009005 Prescribed burn (95 ac)	3/15/20 – 5/15/20	TT	\$4,085	LP-2
EC 4	Tract 2012001 Prescribed burn (64 ac)	3/15/20 – 5/15/20	TT	\$2,752	LP-2
EC 5	Tract 2012002 Prescribed burn (158 ac)	3/15/20 – 5/15/20	TT	\$6,794	LP-2

Priority Area: Species Habitat**Item(s): Other Species of Concern**

No.	Management Activities	Target Dates	Person Responsible	Cost (Estimated)	Budget Line Item
EC 6	Habitat and species surveys on properties where work will occur	As Needed	DB	N/A	N/A
EC 7	Coordination with USFWS and NGPC to identify and mitigate potential impacts associated with land activities	As Needed	DB	N/A	N/A

Priority Area: Operations and Maintenance**Item(s): Basic Property Maintenance Obligations and Needs**

No.	Management Activities	Target Dates	Person Responsible	Cost (Estimated)	Budget Line Item
EC 8	Tract 2009002 building utilities and maintenance	1/1/20 – 12/31/20	TT	\$2,500	LP-4
EC 9	Fence and road maintenance	4/1/20 – 10/1/20	TT	\$1,000	LP-4
EC 10	Mowing	7/15/20 - 10/15/20	TT	\$1,300	LP-4
EC 11	Noxious weed control	6/1/20 – 8/31/20	TT	\$15,000	LP-4

Priority Area: Operations and Maintenance**Item(s): Agricultural Operations**

No.	Management Activities	Target Dates	Person Responsible	Cost (Estimated)	Budget Line Item
EC 12	Tract 2009002 Crop oversight	5/15/20 – 10/15/20	TT	N/A	N/A
EC 13	Tract 2009005 grazing lease oversight	5/15/20 – 10/15/20	TT	N/A	N/A
EC 14	Tract 2012001 haying lease oversight	5/15/20 – 10/15/20	TT	N/A	N/A
EC 15	Tract 2012002 grazing lease oversight	5/15/20 – 10/15/20	TT	N/A	N/A

Personnel Responsibility Key

BS – Bruce Sackett (Director of Acquisitions)

DB – David Baasch (Director of Biological and Ecological Services)

JB – Justin Brei (Biosystems Engineer)

KW – Kevin Werbylo (Water Resource Engineer)

TT – Tim Tunnell (Senior Land Manager)

Property Identification Key:

2009002 – PRRIP Bartels Tract

2009005 – PRRIP McCormick Tract

2012001 – PRRIP Sullwold Tract

2012002 – PRRIP Johns Tract

2015003 – Blue Hole East

2020 Elm Creek Complex Budget Summary

Estimated 2019 Expenditures by Program Budget Line Item

Priority Area	Item	Budget Line Item	Estimated Expenditure
Species Habitat	Target Species Sand and Water Habitat	LP-2	\$13,900
Species Habitat	Whooping Crane Wet Meadow/ Grassland Habitat	LP-2	\$13,631
Subtotal			\$27,531
Operations and Maintenance	Property Maintenance and Agricultural Operations	LP-4	\$19,800
Total			\$47,331

Estimated 2020 Revenues

Tract	Item	Estimated Income
Tract 2009002	Crop Income	\$4,350
Tract 2009005	Grazing Income	\$3,500
Tract 2012001	Haying Income	\$2,000
Tract 2012002	Grazing Income	\$8,100
Total		\$17,950

2020 Pawnee Complex Annual Work Plan

Platte River Recovery Implementation Program

For More Information Contact: Jason Farnsworth, farnsworthj@headwaterscorp.com (308) 237-5728

General Priorities

- * **Good Neighbor Policy** - Conduct all actions in accordance with Program's good neighbor policy.

Adaptive Management Priorities

- * **Species Monitoring** – Monitor whooping crane use of in-channel roosting habitat.

Species Habitat Priorities

- * **Maintain Target Species Sand and Water Habitat** – Control in-channel vegetation to maintain suitable unobstructed view widths for whooping cranes. Remove vegetation from overbank areas adjacent to the channel to promote channel widening through lateral erosion.
- * **Protecting Other Species of Concern** – Identify presence of and determine methods to protect other species of concern during implementation of land-related activities.

Operations and Maintenance Priorities

- * **Basic Property Maintenance Obligations and Needs** – Fulfill basic property ownership obligations and needs on Tracts 2014002 and 2015002.
- * **Agricultural Operations** – Oversight of grazing/ haying leases on Tracts 2014002 and 2015002.

NOTE: The budget section of this work plan only contains information for work items that are specific to these tracts. As such, tract-specific research and monitoring actions are presented but system-scale actions like target species and geomorphology/vegetation monitoring are not.

PAWNEE COMPLEX

Agreement # 10 (1605)

Agreement # 11 (1008)

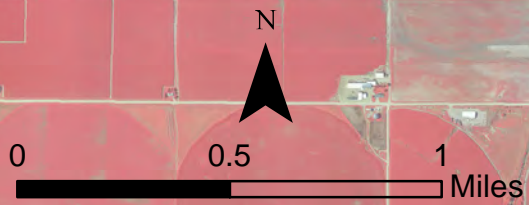
2012001

2015002

2014002

Legend

-  PRRIP-Protected Lands
-  Other Conservation Lands



Priority Area: General**Item(s):** *Complex Land Interest and Good Neighbor Policy*

No.	Management Activities	Target Dates	Person Responsible	Cost (Estimated)	Budget Line Item
PAW 1	Coordination of Program land actions with neighboring landowners	Annual	BS	N/A	N/A

Priority Area: Adaptive Management & Target Species Habitat**Item(s):** *Tern, Plover and Whooping Crane Riverine Habitat Experiments*

No.	Management Activities	Target Dates	Person Responsible	Cost (Estimated)	Budget Line Item
PAW 2	Herbicide treatment on south bank to kill vegetation prior to disking	4/15/20 – 5/15/20	TT	\$2,000	LP-2
PAW 3	In-channel cross disking and overbank mowing to maintain active channel and unobstructed view widths (100 ac)	4/15/20 – 5/15/20 & 9/1/20 – 10/1/20	TT	\$27,800	LP-2

Priority Area: Species Habitat**Item(s):** *Other Species of Concern*

No.	Management Activities	Target Dates	Person Responsible	Cost (Estimated)	Budget Line Item
PAW 4	Habitat and species surveys on properties where work will occur	As Needed	DB	N/A	N/A
PAW 5	Coordination with USFWS and NGPC to identify and mitigate potential impacts associated with land activities	As Needed	DB	N/A	N/A

Priority Area: Operations and Maintenance**Item(s):** *Basic Property Maintenance Obligations and Needs*

No.	Management Activities	Target Dates	Person Responsible	Cost (Estimated)	Budget Line Item
PAW 6	Noxious weed control - (~675 acres)	6/1/20 – 8/31/20	TT	\$4,500	LP-4
PAW 7	Fence and road maintenance	4/1/20 – 10/1/20	TT	\$2,000	LP-4

Priority Area: Operations and Maintenance**Item(s):** *Agricultural Operations*

No.	Management Activities	Target Dates	Person Responsible	Cost (Estimated)	Budget Line Item
PAW 8	Tract 2014002 oversight	5/15/20 – 10/15/20	TT	N/A	N/A
PAW 9	Tract 2015002 oversight	5/15/20 – 10/15/20	TT	N/A	N/A

Personnel Responsibility Key

BS – Bruce Sackett (Director of Acquisitions)

DB – David Baasch (Director of Biological and Ecological Services)

JB – Justin Brei (Biosystems Engineer)

KW – Kevin Werbylo (Water Resource Engineer)

TT – Tim Tunnell (Senior Land Manager)

Property Identification Key:

2014002 - PRRIP Volentine Tract

2015002 - PRRIP BELF Tract

Agreement #10 (1605) - P. Broadfoot

Agreement #11 (1008) - NE DOR Lease

2019 Pawnee Complex Budget Summary

Estimated 2018 Expenditures by Program Budget Line Item

Priority Area	Item	Budget Line Item	Estimated Expenditure
Adaptive Management & Species Habitat	Target Species Sand and Water Habitat	LP-2	\$29,800
Operations and Maintenance	Property Maintenance and Agricultural Operations	LP-4	\$6,500
		Total	\$36,300

Estimated 2020 Revenues

Tract	Item	Estimated Income
Tract 2015002	Crop Income	\$585
Tract 2015002	Grazing Income	\$0
Tract 2014002	Grazing Income	\$0
	Total	\$585

2020 Fort Kearny Complex Annual Work Plan

Platte River Recovery Implementation Program

For More Information Contact: Jason Farnsworth, farnsworthj@headwaterscorp.com (308) 237-5728

General Priorities

- * **Good Neighbor Policy** - Conduct all actions in accordance with Program's good neighbor policy.

Adaptive Management Priorities

- * **Species Monitoring** – Monitor whooping crane use of off-channel palustrine wetlands and in-channel roosting habitat.

Species Habitat Priorities

- * **Maintain Target Species Sand and Water Habitat** – Control in-channel vegetation to maintain suitable unobstructed view widths for whooping cranes. Remove vegetation from overbank areas adjacent to the channel to promote channel widening through lateral erosion.
- * **Protecting Other Species of Concern** – Identify presence of and determine methods to protect other species of concern during implementation of land-related activities.

Operations and Maintenance Priorities

- * **Basic Property Maintenance Obligations and Needs** – Fulfill basic property ownership obligations and needs on Tracts 2008001, 2009001, 2009004, 2010003, 2012003 and 2015001 including fence and road maintenance and noxious weed control.
- * **Agricultural Operations** – Oversight of grazing/haying leases on Tracts 2008001, 2012003, 2009001, 2009004, and 2015001.

NOTE: The budget section of this work plan only contains information for work items that are specific to these tracts. As such, tract-specific research and monitoring actions are presented but system-scale actions like target species and geomorphology/vegetation monitoring are not.

FORT KEARNY COMPLEX

2012003

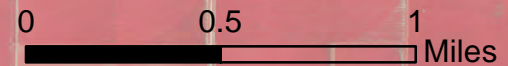
2009001

2009004


2015001

2010003

2008001



Legend

-  PRRIP-Protected Lands
-  Other Conservation Lands

Priority Area: General**Item(s):** *Complex Land Interest and Good Neighbor Policy*

No.	Management Activities	Target Dates	Person Responsible	Cost (Estimated)	Budget Line Item
FK 1	Coordination of Program land actions with neighboring landowners	Annual	BS	N/A	N/A

Priority Area: Species Habitat**Item(s):** *Improve Target Species Sand and Water Habitat*

No.	Management Activities	Target Dates	Person Responsible	Cost (Estimated)	Budget Line Item
FK 2	Disking if necessary to provide in-channel vegetation control (~83 ac)	9/1/20 – 10/1/20	TT	\$23,075	LP-2

Priority Area: Species Habitat**Item(s):** *Whooping Crane Grassland / Wet Meadow Habitat*

No.	Management Activities	Target Dates	Person Responsible	Cost (Estimated)	Budget Line Item
FK 3	Tract 2009001 Annual electrical service fee at irrigation well to supplement water to wetland	3/1/20 - 4/15/20 & 10/1/20-11/15/20	TT	\$5,400	LP-2
FK 4	Tract 2008001-South Prescribe burn (116 ac)	3/15/20 – 5/15/20	TT	\$4,988	LP-2
FK 5	Tract 2009001- Prescribe burn (174 ac)	3/15/20 – 5/15/20	TT	\$7,482	LP-2
FK 6	Tract 2015001 NE unit Prescribe burn (65 ac)	3/15/20 – 5/15/20	TT	\$2,795	LP-2

Priority Area: Species Habitat**Item(s):** *Other Species of Concern*

No.	Management Activities	Target Dates	Person Responsible	Cost (Estimated)	Budget Line Item
FK 7	Habitat and species surveys on properties where work will occur	As Needed	DB	N/A	N/A
FK 8	Coordination with USFWS and NGPC to identify and mitigate potential impacts associated with land activities	As Needed	DB	N/A	N/A

Priority Area: Operations and Maintenance**Item(s):** *Basic Property Maintenance Obligations and Needs*

No.	Management Activities	Target Dates	Person Responsible	Cost (Estimated)	Budget Line Item
FK 9	Tract 2009004 & 2015001 Electricity	1/1/20 – 12/31/20	TT	\$600	LP-4
FK 10	Noxious weed control	6/1/20 – 8/31/20	TT	\$13,000	LP-4
FK 11	Fence and road maintenance	4/1/20 – 10/1/20	TT	\$4,500	LP-4
FK 12	Mowing	7/15/20-10/15/20	TT	\$1,000	LP-4

Item(s): *Agricultural Operations*

No.	Management Activities	Target Dates	Person Responsible	Cost (Estimated)	Budget Line Item
FK 13	Tract 2008001 grazing lease oversight	5/15/20 – 10/15/20	TT	N/A	N/A
FK 14	Tract 2012003 grazing lease oversight	5/15/20 – 10/15/20	TT	N/A	N/A
FK 15	Tract 2015001 grazing lease oversight	5/15/20 – 10/15/20	TT	N/A	N/A

Personnel Responsibility Key

BS – Bruce Sackett (Director of Acquisitions)

DB – David Baasch (Director of Biological and Ecological Services)

JB – Justin Brei (Biosystems Engineer)

KW – Kevin Werbylo (Water Resource Engineer)

TT – Tim Tunnell (Senior Land Manager)

Property Identification Key:

2008001 – PRRIP Wyoming Property

2009001 – PRRIP Fox Tract

2009004 – PRRIP Hostetler Tract

2010003 – PRRIP Sherrerd/Clark Easement

2012003 – PRRIP Blessing Tract

2015001 – PRRIP Speidell Tract

2020 Ft Kearny Complex Budget Summary

Estimated 2020 Expenditures by Program Budget Line Item

Priority Area	Item	Budget Line Item	Estimated Expenditure
Species Habitat	Improve Sand and Water Habitat	LP-2	\$23,075
Species Habitat	Whooping Crane Wet Meadow/ Grassland Habitat	LP-2	\$20,665
Subtotal			\$43,740
Operations and Maintenance	Property Maintenance and Agricultural Operations	LP-4	\$19,100
Total			\$62,840

Estimated 2020 Revenues

Tract	Item	Estimated Income
Tract 2008001 N & 2012003	Grazing Income	\$5,250
Tract 2008001 S	Haying Income	\$7,000
Tract 2009001	Grazing Income	\$7,500
Tract 2009004	Grazing Income	\$11,825
Tract 2012003	Cropland Income	\$1,800
Tract 2015001	Grazing Income	\$11,825
Total		\$45,200

2020 Minden – Gibbon Management Agreement Annual Work Plan

Platte River Recovery Implementation Program

For More Information Contact: Jason Farnsworth, farnsworthj@headwaterscorp.com (308) 237-5728

Adaptive Management Priorities

- * ***Species Monitoring*** – Monitor whooping crane use of in-channel roosting habitat.

Species Habitat Priorities

- * ***Maintain Target Species Sand and Water Habitat*** – Control in-channel vegetation to maintain suitable unobstructed view widths for whooping cranes.
- * ***Protecting Other Species of Concern*** – Identify presence of and determine methods to protect other species of concern during implementation of land-related activities.

MINDEN - GIBBON MANAGEMENT AGREEMENT



2009008

09 Rowe



0 0.5 1 Miles

Legend

-  PRRIP-Protected Lands
-  Other Conservation Lands

Priority Area: Species Habitat**Item(s):** *Improve Target Species Sand and Water Habitat*

No.	Management Activities	Target Dates	Person Responsible	Cost (Estimated)	Budget Line Item
M-G 1	Disking if necessary to provide in-channel vegetation control (~73 ac)	9/1/20 – 10/1/20	TT	\$20,295	LP-2
M-G 2	Brush, tree, cattail herbicide spraying	1/16/20-11/1/20	TT	\$8,400	LP-2

Personnel Responsibility Key

BS – Bruce Sackett (Director of Acquisitions)

DB – David Baasch (Director of Biological and Ecological Services)

JB – Justin Brei (Biosystems Engineer)

KW – Kevin Werbylo (Water Resource Engineer)

TT – Tim Tunnell (Senior Land Manager)

2020 Minden-Gibbon Management Agreement Budget Summary

Estimated 2020 Expenditures by Program Budget Line Item

Priority Area	Item	Budget Line Item	Estimated Expenditure
Species Habitat	Improve Target Species Sand and Water Habitat	LP-2	\$28,695
Total			\$28,695

2020 Clark Island Complex Annual Work Plan

Platte River Recovery Implementation Program

For More Information Contact: Jason Farnsworth, farnsworthj@headwaterscorp.com (308) 237-5728

General Priorities

- * **Complex Land Interest** - Execute management agreements with conservation and private landowners that will allow the Program to implement necessary construction, maintenance and research/monitoring activities.
- * **Good Neighbor Policy** - Conduct all actions in accordance with Program's good neighbor policy.

Adaptive Management Priorities

- * **Whooping Crane Riverine Habitat** – Design and implement vegetation clearing to provide a range of unobstructed view widths above the Programs minimums
- * **Species Monitoring** – Monitor whooping crane use of palustrine wetlands and in-channel roosting habitat.

Species Habitat Priorities

- * **Maintain Target Species Sand and Water Habitat** – Control in-channel vegetation to maintain suitable unobstructed view widths for whooping cranes.
- * **Protecting Other Species of Concern** – Identify presence of and determine methods to protect other species of concern during implementation of land-related activities.

Operations and Maintenance Priorities

- * **Basic Property Maintenance Obligations and Needs** – Fulfill basic property ownership obligations and needs on Tract 2010004 including fence and road maintenance and noxious weed control.
- * **Agricultural Operations** – Oversight of grazing/ haying leases on Tract 2010004

NOTE: The budget section of this work plan only contains information for work items that are specific to these tracts. As such, tract-specific research and monitoring actions are presented but system-scale actions like target species and geomorphology/vegetation monitoring are not.



CLARK ISLAND COMPLEX

2018001



0 0.5 1 Miles

Legend

-  PRRIP-Protected Lands
-  Other Conservation Lands

Priority Area: General**Item(s):** *Complex Land Interest and Complex-Level Planning*

No.	Management Activities	Target Dates	Person Responsible	Cost (Estimated)	Budget Line Item
CI 1	Execution of management agreements w/ other private landowners for in-channel research and habitat construction activities	1/1/20 – 6/30/20	BS	N/A	N/A
CI 2	Coordination of Program land actions with neighboring landowners	Annual	BS	N/A	N/A

Priority Area: Species Habitat**Item(s):** *Improve Target Species Sand and Water Habitat*

No.	Management Activities	Target Dates	Person Responsible	Cost (Estimated)	Budget Line Item
CI 3	Clear Trees & Burn, Bury on Islands (~23 ac)	7/15/20 – 10/1/20	JB	\$50,000	LP-2
CI 4	Disking if necessary to provide in-channel vegetation control (~90 ac)	9/1/20 – 10/1/20	TT	\$25,020	LP-2

Priority Area: Species Habitat**Item(s):** *Whooping Crane Grassland / Wet Meadow Habitat*

CI 5	Tract 2018001 Russian Olive & Tree Pile Removal	1/15/20 – 5/15/20	TT	\$15,000	LP-2
CI 6	Tract 2018001 Prescribe burn (82 ac)	3/15/20 – 5/15/20	TT	\$3,526	LP-2
CI 7	Tract 2018001 Prescribe burn (11 ac)	3/15/20 – 5/15/20	TT	\$473	LP-2

Priority Area: Species Habitat**Item(s):** *Other Species of Concern*

No.	Management Activities	Target Dates	Person Responsible	Cost (Estimated)	Budget Line Item
CI 8	Habitat and species surveys on properties where work will occur	As Needed	DB	N/A	N/A
CI 9	Coordination with USFWS and NGPC to identify and mitigate potential impacts associated with land activities	As Needed	DB	N/A	N/A

Priority Area: Operations and Maintenance**Item(s):** *Basic Property Maintenance Obligations and Needs*

No.	Management Activities	Target Dates	Person Responsible	Cost (Estimated)	Budget Line Item
CI 10	Fence and road maintenance	1/1/20 – 12/31/20	TT	\$10,000	LP-4
CI 11	Noxious weed control	6/1/20 – 8/31/20	TT	\$3,000	LP-4
CI 12	Mowing	7/15/20- 10/15/20	TT	\$1,500	LP-4

Priority Area: Operations and Maintenance**Item(s):** *Agricultural Operations*

No.	Management Activities	Target Dates	Person Responsible	Cost (Estimated)	Budget Line Item
CI 13	Tract 2018001 grazing & haying lease oversight	5/15/20 – 10/15/20	TT	N/A	N/A

Personnel Responsibility Key

BS – Bruce Sackett (Director of Acquisitions)

DB – David Baasch (Director of Biological and Ecological Services)

JB – Justin Brei (Biosystems Engineer)

TT – Tim Tunnell (Senior Land Manager)

Property Identification Key:

2018001 – PRRIP Dippel Tract

2020 Clark Island Complex Budget Summary

Estimated 2020 Expenditures by Program Budget Line Item

Priority Area	Item	Budget Line Item	Estimated Expenditure
Species Habitat	Improve Target Species Sand and Water Habitat	LP-2	\$75,020
Species Habitat	Whooping Crane Wet Meadow/ Grassland Habitat	LP-2	\$18,999
Subtotal			\$94,019
Operations and Maintenance	Property Maintenance and Agricultural Operations	LP-4	\$14,500
Total			\$108,519

Estimated 2020 Revenues

Tract	Item	Estimated Income
Tract 2018001	Meadow Grazing Income	\$7,150
Tract 2018001	Accretion Grazing Income	\$6,000
Tract 2018001	Cropland Cash Rent Income	\$19,140
Total		\$32,290

2020 Shoemaker Island Complex Annual Work Plan

Platte River Recovery Implementation Program

For More Information Contact: Jason Farnsworth, farnsworthj@headwaterscorp.com (308) 237-5728

General Priorities

- * **Good Neighbor Policy** - Conduct all actions in accordance with Program's good neighbor policy.

Adaptive Management Priorities

- * **Species Monitoring** – Monitor whooping crane use of palustrine wetlands and in-channel roosting habitat.

Species Habitat Priorities

- * **Maintain Target Species Sand and Water Habitat** – Control in-channel vegetation to maintain suitable unobstructed view widths for whooping cranes.
- * **Protecting Other Species of Concern** – Identify presence of and determine methods to protect other species of concern during implementation of land-related activities.

Operations and Maintenance Priorities

- * **Basic Property Maintenance Obligations and Needs** – Fulfill basic property ownership obligations and needs on Tract 2010004 including fence and road maintenance and noxious weed control.
- * **Agricultural Operations** – Oversight of grazing/ haying leases on Tract 2010004

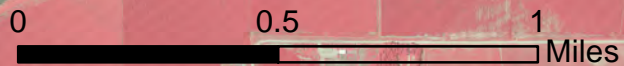
NOTE: The budget section of this work plan only contains information for work items that are specific to these tracts. As such, tract-specific research and monitoring actions are presented but system-scale actions like target species and geomorphology/vegetation monitoring are not.

SHOEMAKER ISLAND COMPLEX



2010004

07-WCMT

08-Foot & Osborne



Legend

-  PRRIP-Protected Lands
-  Other Conservation Lands

Priority Area: General**Item(s):** *Complex Land Interest and Complex-Level Planning*

No.	Management Activities	Target Dates	Person Responsible	Cost (Estimated)	Budget Line Item
SI 1	Coordination of Program land actions with neighboring landowners	Annual	BS	N/A	N/A

Priority Area: Species Habitat**Item(s):** *Improve Target Species Sand and Water Habitat*

No.	Management Activities	Target Dates	Person Responsible	Cost (Estimated)	Budget Line Item
SI 2	Disking if necessary to provide in-channel vegetation control (~75 ac)	9/1/20 – 10/1/20	TT	\$20,850	LP-2

Priority Area: Species Habitat**Item(s):** *Whooping Crane Grassland / Wet Meadow Habitat*

SI 3	Tract 2010004-South Prescribe burn (191 ac)	3/15/20 – 5/15/20	TT	\$8,213	LP-2
SI 4	Tract 2010004-South Prescribe burn (46 ac)	3/15/20 – 5/15/20	TT	\$1,978	LP-2

Priority Area: Species Habitat**Item(s):** *Other Species of Concern*

No.	Management Activities	Target Dates	Person Responsible	Cost (Estimated)	Budget Line Item
SI 5	Habitat and species surveys on properties where work will occur	As Needed	DB	N/A	N/A
SI 6	Coordination with USFWS and NGPC to identify and mitigate potential impacts associated with land activities	As Needed	DB	N/A	N/A

Priority Area: Operations and Maintenance**Item(s):** *Basic Property Maintenance Obligations and Needs*

No.	Management Activities	Target Dates	Person Responsible	Cost (Estimated)	Budget Line Item
SI 7	Fence and road maintenance	1/1/20 – 12/31/20	TT	\$1,500	LP-4
SI 8	Noxious weed control	6/1/20 – 8/31/20	TT	\$4,000	LP-4
SI 9	Mowing	7/15/20- 10/15/20	TT	\$1,500	LP-4
SI 10	Tract2010004 Electricity	5/15/20 – 10/15/20	TT	\$200	LP-4

Priority Area: Operations and Maintenance**Item(s):** *Agricultural Operations*

No.	Management Activities	Target Dates	Person Responsible	Cost (Estimated)	Budget Line Item
SI 11	Tract 2010004 grazing & haying lease oversight	5/15/20 – 10/15/20	TT	N/A	N/A

Personnel Responsibility Key

BS – Bruce Sackett (Director of Acquisitions)

DB – David Baasch (Director of Biological and Ecological Services)

JB – Justin Brei (Biosystems Engineer)

KW – Kevin Werbylo (Water Resource Engineer)

TT – Tim Tunnell (Senior Land Manager)

Property Identification Key:

2010004 – PRRIP Binfield Tract

2020 Shoemaker Island Complex Budget Summary

Estimated 2020 Expenditures by Program Budget Line Item

Priority Area	Item	Budget Line Item	Estimated Expenditure
Species Habitat	Improve Target Species Sand and Water Habitat	LP-2	\$20,850
Species Habitat	Whooping Crane Wet Meadow/ Grassland Habitat	LP-2	\$10,191
Subtotal			\$31,041

Operations and Maintenance	Property Maintenance and Agricultural Operations	LP-4	\$7,200
Total			\$38,241

Estimated 2019 Revenues

Tract	Item	Estimated Income
Tract 2010004	Grazing & Haying Income	\$42,595
Total		\$42,595

2020 Chapman Complex Annual Work Plan

Platte River Recovery Implementation Program

For More Information Contact: Jason Farnsworth, farnsworthj@headwaterscorp.com (308) 237-5728

General Priorities

- * **Restoration and Management Planning** – Development of restoration and management plan for Chapman Complex.
- * **Complex Land Interest** - Execute management agreements with conservation and private landowners that will allow the Program to implement necessary construction, maintenance and research/monitoring activities.
- * **Good Neighbor Policy** - Conduct all actions in accordance with Program's good neighbor policy.

Adaptive Management Priorities

- * **Whooping Crane Riverine Habitat** – Design and implement vegetation clearing to provide a range of unobstructed view widths above the Programs minimums
- * **Species Monitoring** – Monitor whooping crane use of palustrine wetlands and in-channel roosting habitat.

Species Habitat Priorities

- * **Improve Target Species Sand and Water Habitat** – Control in-channel vegetation to maintain suitable unobstructed view widths for whooping cranes.
- * **Protecting Other Species of Concern** – Identify presence of and determine methods to protect other species of concern during implementation of land-related activities.

Operations and Maintenance Priorities

- * **Basic Property Maintenance Obligations and Needs** – Fulfill basic property ownership obligations and needs on Tracts including fence and road maintenance and noxious weed control.
- * **Agricultural Operations** – Oversight of grazing/ haying leases

NOTE: The budget section of this work plan only contains information for work items that are specific to these tracts. As such, tract-specific research and monitoring actions are presented but system-scale actions like target species and geomorphology/vegetation monitoring are not.

CHAPMAN COMPLEX

201900?

201900?

N

0

0.5

1

Miles

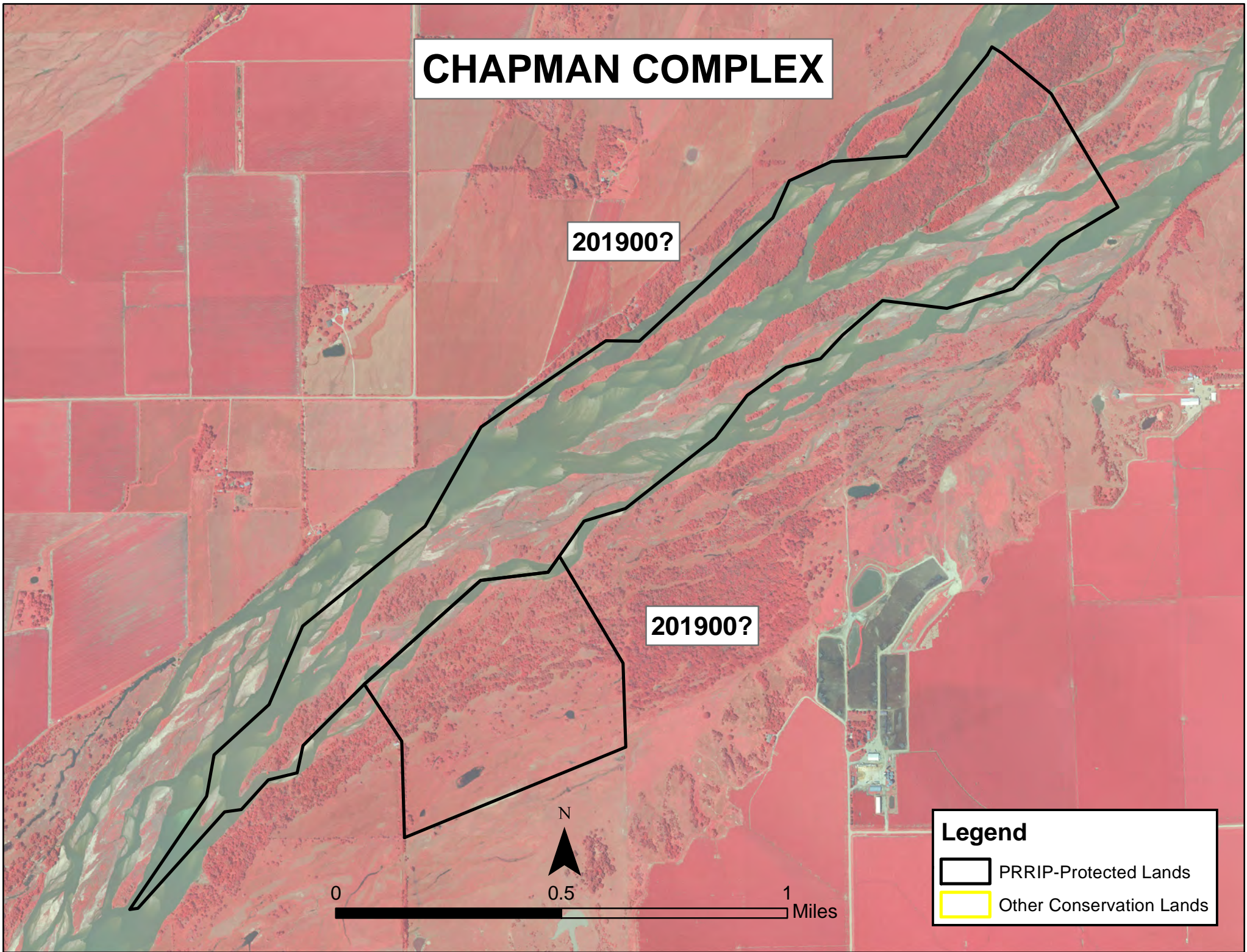
Legend



PRRIP-Protected Lands



Other Conservation Lands



Priority Area: General**Item(s):** *Complex Land Interest and Complex-Level Planning*

No.	Management Activities	Target Dates	Person Responsible	Cost (Estimated)	Budget Line Item
CC 1	Restoration and Management Planning for Chapman Complex	1/1/20 - 10/1/20	JB, TT	N/A	N/A
CC 2	Execution of management agreements w/ other private landowners for in-channel research and habitat construction activities	1/1/20 – 6/30/20	BS	N/A	N/A
CC 3	Coordination of Program land actions with neighboring landowners	Annual	BS	N/A	N/A

Priority Area: Species Habitat**Item(s):** *Improve Target Species Sand and Water Habitat*

No.	Management Activities	Target Dates	Person Responsible	Cost (Estimated)	Budget Line Item
CC 4	Clear Trees & Burn, Bury on Island (~ 80 ac)	7/15/20 – 10/1/20	JB	\$160,000	LP-2
CC 5	Construct 10 acres of on-channel LT/PP MCA habitat	1/1/20 - 4/15/20	JB	\$15,330	LP-2
CC 6	Disking if necessary to provide in-channel vegetation control (~100 ac)	9/1/20 – 10/1/20	TT	\$27,800	LP-2

Priority Area: Species Habitat**Item(s):** *Whooping Crane Grassland / Wet Meadow Habitat*

CC 7	No Items	N/A	N/A	N/A	N/A
------	----------	-----	-----	-----	-----

Priority Area: Species Habitat**Item(s):** *Other Species of Concern*

No.	Management Activities	Target Dates	Person Responsible	Cost (Estimated)	Budget Line Item
CC 8	Habitat and species surveys on properties where work will occur	As Needed	DB	N/A	N/A
CC 9	Coordination with USFWS and NGPC to identify and mitigate potential impacts associated with land activities	As Needed	DB	N/A	N/A

Priority Area: Operations and Maintenance**Item(s):** *Basic Property Maintenance Obligations and Needs*

No.	Management Activities	Target Dates	Person Responsible	Cost (Estimated)	Budget Line Item
CC 10	Fence and road maintenance	1/1/20 – 12/31/20	TT	\$10,000	LP-4
CC 11	Noxious weed control	6/1/20 – 8/31/20	TT	\$10,000	LP-4
CC 12	Mowing	7/15/20- 10/15/20	TT	\$2,000	LP-4

Priority Area: Operations and Maintenance**Item(s):** *Agricultural Operations*

No.	Management Activities	Target Dates	Person Responsible	Cost (Estimated)	Budget Line Item
CC 13		5/15/20 – 10/15/20	N/A	N/A	N/A

Personnel Responsibility Key

BS – Bruce Sackett (Director of Acquisitions)

DB – David Baasch (Director of Biological and Ecological Services)

JB – Justin Brei (Biosystems Engineer)

KW – Kevin Werbylo (Water Resource Engineer)

TT – Tim Tunnell (Senior Land Manager)

Property Identification Key:

201900? – PRRIP Bergren Tract

201900? – PRRIP Robinson Tract

2020 Chapman Complex Budget Summary

Estimated 2020 Expenditures by Program Budget Line Item

Priority Area	Item	Budget Line Item	Estimated Expenditure
Species Habitat	Improve Target Species Sand and Water Habitat	LP-2	\$187,800
Species Habitat	Create In-channel Sand & Water Habitat	LP-2	\$15,330
Species Habitat	Whooping Crane Wet Meadow/ Grassland Habitat	LP-2	\$0
Subtotal			\$203,130
Operations and Maintenance	Property Maintenance and Agricultural Operations	LP-4	\$22,000
Total			\$225,130

Estimated 2019 Revenues

Tract	Item	Estimated Income
Total		\$0

2020 Water Properties Annual Work Plan

Platte River Recovery Implementation Program

For More Information Contact: Jason Farnsworth, farnsworthj@headwaterscorp.com (308) 237-5728

General Priorities

- * **Good Neighbor Policy** - Conduct all actions in accordance with Program's good neighbor policy.

Operations and Maintenance Priorities

- * **Basic Property Maintenance Obligations and Needs** – Fulfill basic property ownership obligations and needs on Tracts W2016001, W2016002, W2017001, & W2017002 including fence and road maintenance, irrigation management and noxious weed control.
- * **Agricultural Operations** – Oversight of grazing/ haying lease on Tract W2016001 and custom farming on Tract W2016002

Priority Area: General

Item(s): *Complex Land Interest and Complex-Level Planning*

No.	Management Activities	Target Dates	Person Responsible	Cost (Estimated)	Budget Line Item
WP 1	Coordination of Program land actions with neighboring landowners	Annual	BS	N/A	N/A

Priority Area: Operations and Maintenance

Item(s): *Basic Property Maintenance Obligations and Needs*

No.	Management Activities	Target Dates	Person Responsible	Cost (Estimated)	Budget Line Item
WP 2	Fence and road maintenance	1/1/20–12/31/20	TT	\$7,000	WP-4 (j)
WP 3	Tract W201701 Boundary Fence	1/1/20–12/31/20	TT	\$16,500	WP-4 (j)
WP 4	Noxious weed control	6/1/20 – 8/31/20	TT	\$15,000	WP-4 (j)
WP 5	Mowing	7/15/20-10/15/20	TT	\$2,000	WP-4 (j)
WP 6	Tract W2016002 Custom Farm Expense	5/15/20 – 10/15/20	TT	\$23,000	WP-4 (j)
WP 7	Tracts W2016002 & W2017001 Electricity	5/15/20 – 10/15/20	TT	\$500	WP-4 (j)

WATER PROPERTIES

W201701

Dawson County

W201703

Phelps County

W201602

Buffalo County

W201702

Lincoln County

Source: Esri, DigitalGlobe, GeoEye, Earthstar
Geographics, CNES/Airbus DS, USDA, USGS,
AeroGRID, IGN, and the GIS User Community

Priority Area: Operations and Maintenance

Item(s): *Agricultural Operations*

No.	Management Activities	Target Dates	Person Responsible	Cost (Estimated)	Budget Line Item
WP 8	TractW 2016002 Lease Oversight	5/15/20 – 10/15/20	TT	N/A	WP-4 (j)

Personnel Responsibility Key

BS – Bruce Sackett (Director of Acquisitions)

DB – David Baasch (Director of Biological and Ecological Services)

JB – Justin Brei (Biosystems Engineer)

KW – Kevin Werbylo (Water Resource Engineer)

TT – Tim Tunnell (Senior Land Manager)

ST – Seth Turner (Senior Water Resources Engineer)

Property Identification Key:

W201602 – PRRIP Lindstrum Tract

W201701 – PRRIP Edlund Tract

W201702 - PRRIP Albrecht Tract

W201703 - PRRIP Lakeside Tract

2020 Water Properties Budget Summary

Estimated 2020 Expenditures by Program Budget Line Item

Priority Area	Item	Budget Line Item	Estimated Expenditure
Operations and Maintenance	Property Maintenance and Agricultural Operations	WP-4j	\$64,000
		Total	\$64,000

Estimated 2019 Revenues

Tract	Item	Estimated Income
Tract W201602	Crop Income	\$32,576
Tract W201701	N/A	\$0
Tract W201702	N/A	\$0
	Total	\$32,576